

LOOKING BEYOND THE DISABILITY: EXPLORING SOCIETAL AND STRUCTURAL FACTORS IN FASD

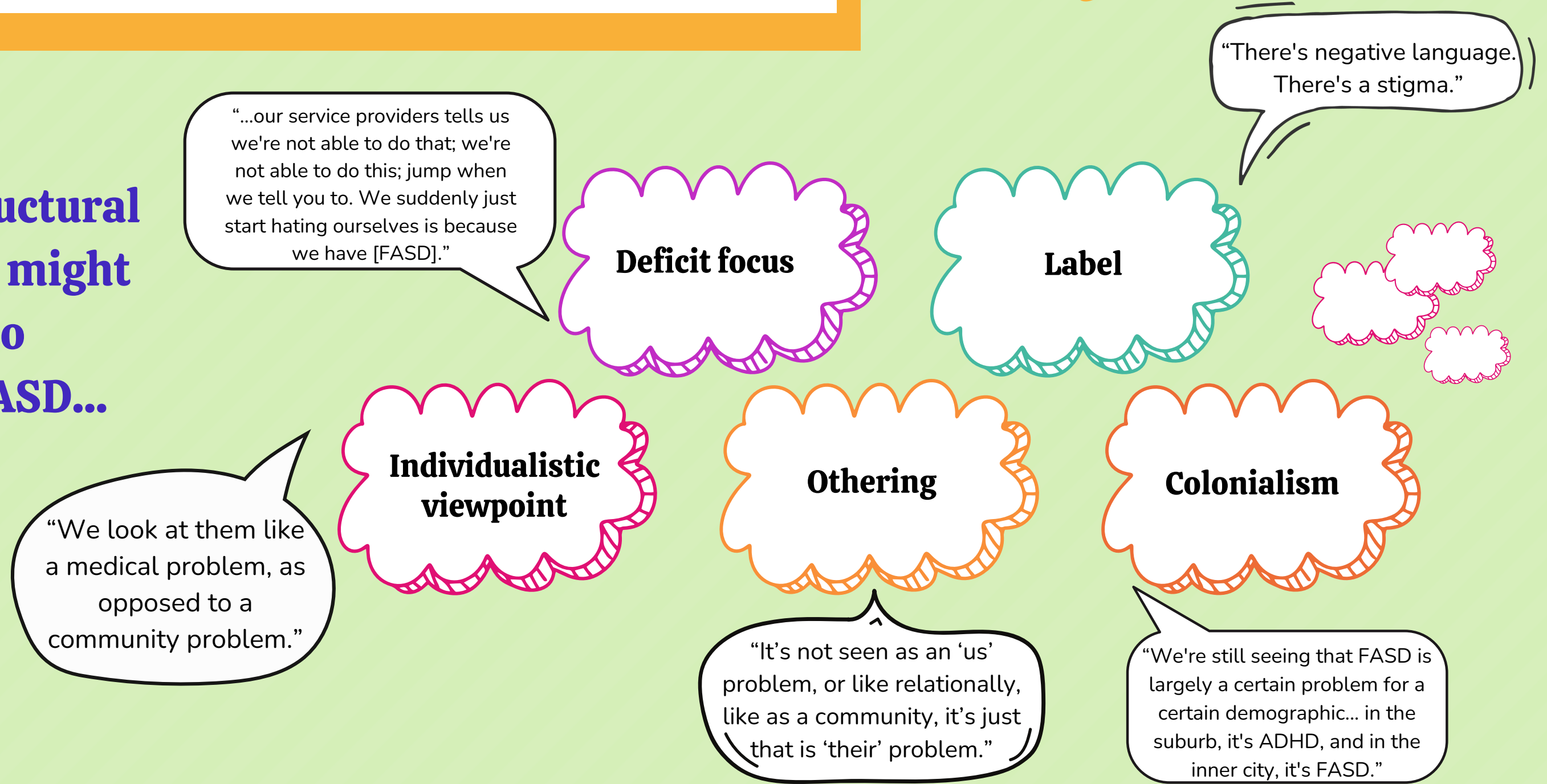
Jeannine Cull & Marleny Bonnycastle, Ph.D.

So, you know...?

... Often, the general public only sees FASD as an individual issue. Situating FASD within a broader context of social disparities and marginalization urges us to explore societal and structural factors that stigmatize mothers, individuals, and families affected by FASD.

1. What societal and structural factors might contribute to stigma in FASD?
2. How can we amplify the voices of people with lived experience to promote dignity in FASD?

Societal structural factors that might contribute to stigma in FASD...



*Let’s talk more about... dignity

